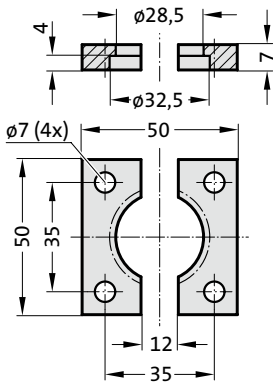
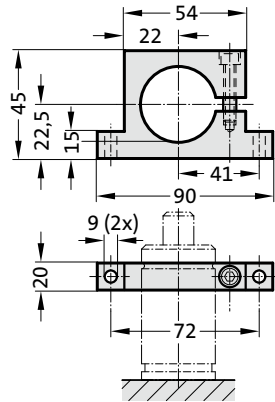


GASDRUCKFEDER POWERLINE BEFESTIGUNGSVARIANTEN

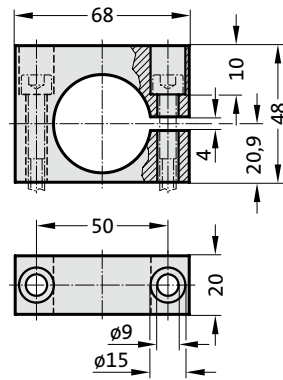
2480.022.00150



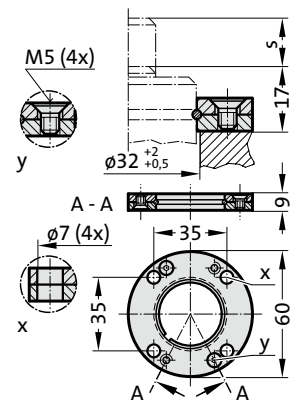
2480.044.00150²⁾



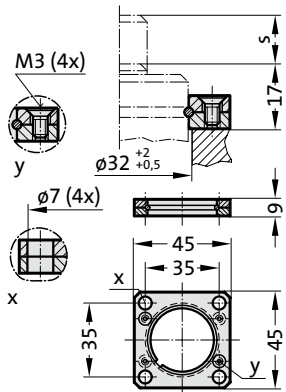
2480.044.03.00150²⁾



2480.055.00150



2480.057.00150



Hinweis:

²⁾ Achtung:
Federkraft muss durch Anschlag-
fläche aufgenommen werden!

Einbaubeispiele:

