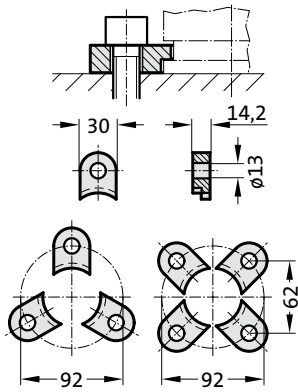
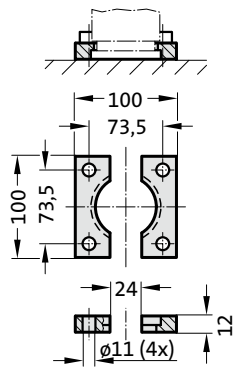


# GAS SPRING POWERLINE MOUNTING VARIATIONS

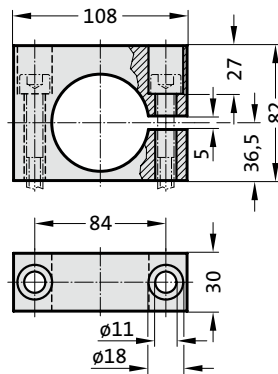
2480.007.01000



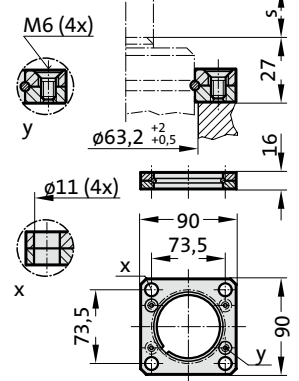
2480.022.01000



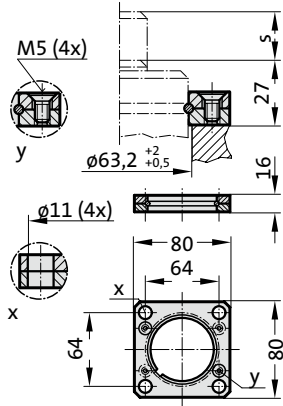
2480.044.03.01000<sup>2)</sup>



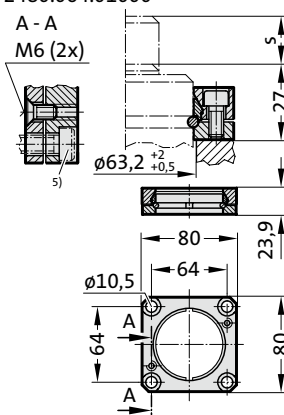
2480.057.01000



2480.057.03.01000



2480.064.01000<sup>4)</sup>



## Note:

<sup>2)</sup> Attention:

The spring force must be absorbed by the stop Surface!

<sup>4)</sup> Square collar flange, non-rotating, fixing for composite connection.

<sup>5)</sup> Machine screws with hexagonal socket (compact head recommended)