

Gas spring MAXFORCE

Note:

Initial spring force at 200 bar = 4925 daN

Order No for spare parts kit: 2497.15.04700

Pressure medium: Nitrogen N₂

Max. filling pressure: 200 bar

Min. filling pressure: 20 bar

Working temperature: 0°C to +80°C

Temperature related force increase: ± 0.3%/°C

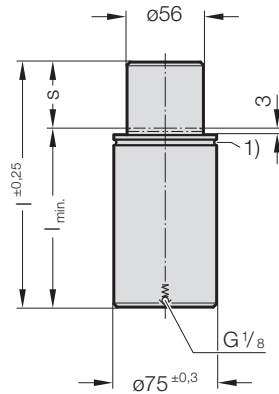
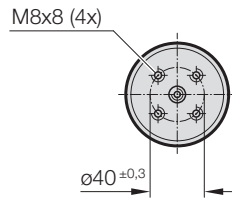
Max. recommended extensions per minute:

approx. 30 to 70 (at 20°C)

Max. piston rod speed: 1.6 m/s

1) Only for mounting additional wipers

2497.15.04700.

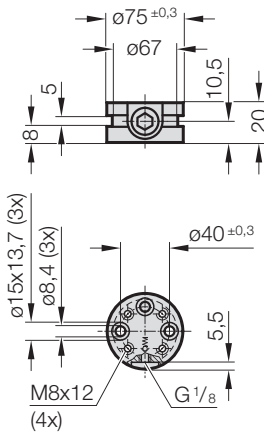


PED
2014/68/EU



2497.00.15.20.04700

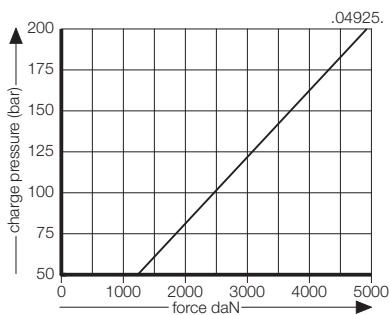
Adapter base plate with valve, flat-sealing



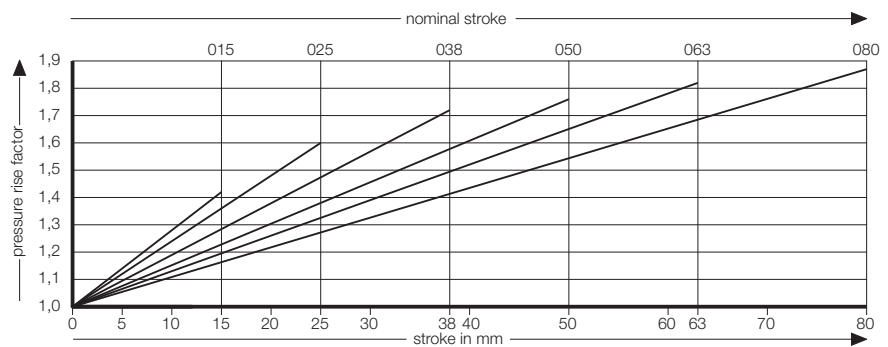
2497.15.04700. Gas spring MAXFORCE

Order No	s (Stroke max.)	l _{min.}	l	Gas volume [l]	Weight [kg]
2497.15.04700.015	15	85	100	0.158	1.72
2497.15.04700.025	25	95	120	0.204	1.9
2497.15.04700.038	38	112	150	0.277	2.17
2497.15.04700.050	50	130	180	0.351	2.44
2497.15.04700.063	63	147	210	0.428	2.72
2497.15.04700.080	80	170	250	0.52	3.08

Initial spring force versus charge pressure



Spring force Diagram displacement versus stroke rise



Pressure rise factor accounts for displacement but not external influences!